

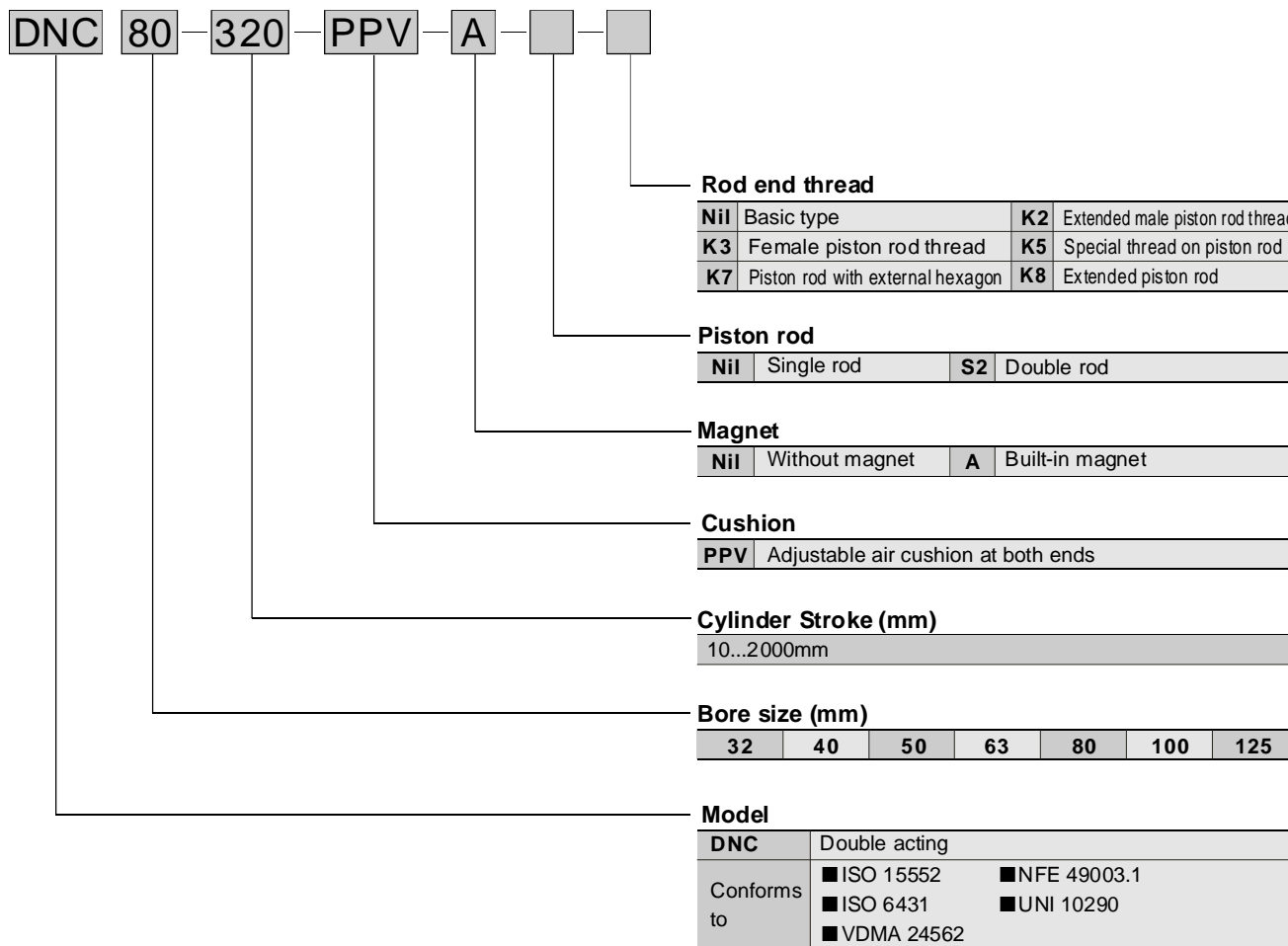
ISO / VDMA Standard Cylinder

Double Acting, Single Rod / Double Rod

Series DNC

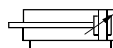


◆ How to Order

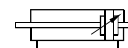


Symbol

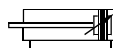
DNC□-□-PPV



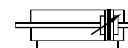
DNC□-□-PPV-S2



DNC□-□-PPV-A



DNC□-□-PPV-A-S2



- I
- CJP
- CJ1
- DNC**
- DNCB
- DNG
- C95
- SI
- CS1
- MB
- SU
- SC
- DSNU
- C85
- CJ2
- CM2
- MA
- MAL
- ADVU
- CQ2
- CQS
- SDA
- CU
- DPZ
- CXS
- TN
- ADVUL
- CQM
- MGP
- MGG
- CRA 1
- CY1B
- CS
Auto switch
- D
Auto switch
- AC,AD
- HR
- RB
- RBQ

ISO / VDMA Standard Cylinder

Double Acting, Single Rod / Double Rod

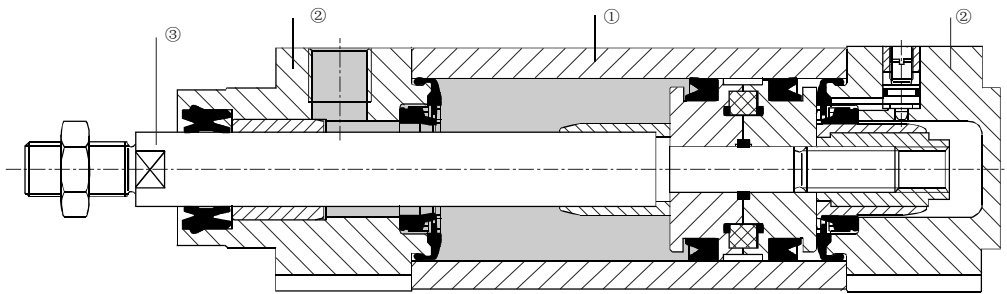
Series DNC

◆ Specifications

Bore size (mm)		32	40	50	63	80	100	125
Action	Double acting, single rod / double rod							
Fluid	Filtered compressed air							
Proof Pressure	1.5 Mpa							
Operating pressure range	0.05~1.0 Mpa							
Ambient and fluid temperature	-20~80°C (No freezing)							
Port size		G1/8		G1/4		G3/8		G1/2
Piston rod thread	Basic type	M10×1.25	M12×1.25	M16×1.5		M20×1.5		M27×2.0
	K3	M6	M8	M10		M12		M16
	K5	M10	M12	M16		M20		M27
Cushion	Adjustable air cushion at both ends							

Note): Please contact with ANSSION for the mounting accessories.

◆ Materials

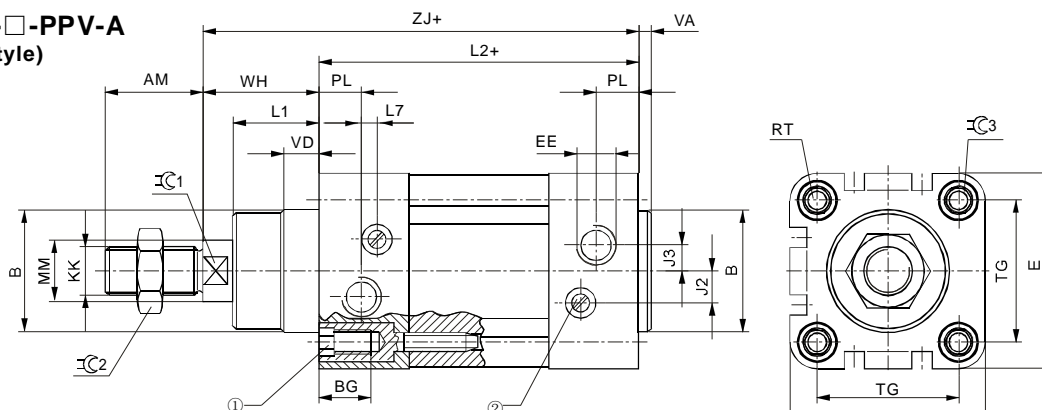


Basic type

① Cylinder barrel	Wrought aluminium alloy, smooth-anodised	③ Piston rod	High-alloy steel
② Bearing and end cap	Die-cast aluminium	Seals	Polyurethane, nitrile rubber

◆ Dimensions

DNC□-□-PPV-A
(Basic style)



- ① Socket head screw with female thread for mounting attachments
- ② Regulating screw for adjustable end-position cushioning

+ = plus stroke length

Note): The dimensions of built-in magnet type cylinder are exactly the same as without-magnet type cylinder.

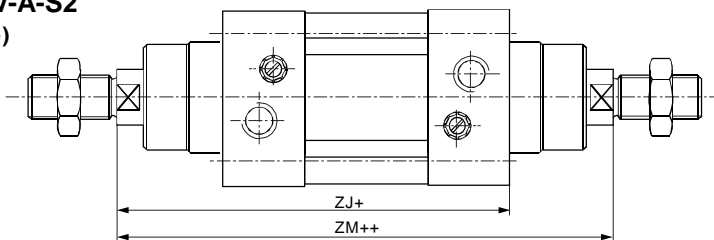
ISO / VDMA Standard Cylinder

Double Acting, Single Rod / Double Rod

Series DNC



DNC □-□-PPV-A-S2
(Double rod style)



+ = plus stroke length
++ = plus 2 stroke lengths

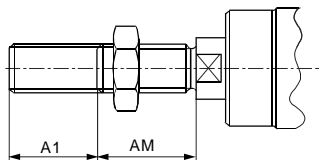
- - Note
The thread designs on both piston rod ends are identical.

Note): The dimensions of built-in magnet type cylinder are exactly the same as without-magnet type cylinder.

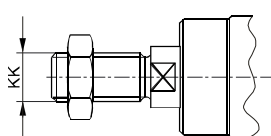
Bore size(mm)	AM	B φ d11	BG	E	EE	J2	J3	KK	L1	L2
32	22	30	16	45	G1/8	6	5.2	M10×1.25	18	94
40	24	35	16	54	G1/4	8	6	M12×1.25	21.5	105
50	32	40	17	64	G1/4	10.4	8.5	M16×1.5	28	106
63	32	45	17	75	G3/8	12.4	10	M16×1.5	28.5	121
80	40	45	17	93	G3/8	12.5	8	M20×1.5	34.7	128
100	40	55	17	110	G1/2	12	10	M20×1.5	38.2	138
125	54	60	22	134	G1/2	13	8	M27×2.0	46	160

Bore size (mm)	L7	MM φ	PL	RT	TG	VA	VD	WH	ZJ	⊖C1	⊖C2	⊖C3	ZM
32	3.3	12	15.6	M6	32.5	4	10	26	120	10	16	6	148
40	3.6	16	14	M6	38	4	10.5	30	135	13	18	6	167
50	5.1	20	14	M8	46.5	4	11.5	37	143	17	24	8	183
63	6.6	20	17	M8	56.5	4	15	37	158	17	24	8	199
80	10.5	25	16.4	M10	72	4	15.7	46	174	22	30	6	222
100	8	25	18.8	M10	89	4	19.2	51	189	22	30	6	240
125	14	32	18	M12	110	6	20.5	65	225	27	36	8	291

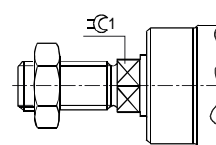
K2-Extended male piston rod thread



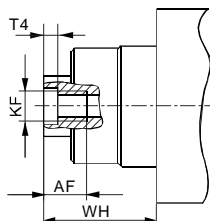
K5-Special piston rod thread



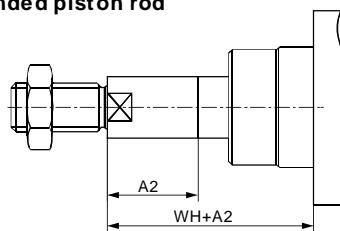
K7-Piston rod with external hexagon



K3-Female piston rod thread



K8-Extended piston rod



Bore size (mm)	A1 max.	A2 max.	AF	AM	KF	KK		T4	WH	⊖C1
						Basic thread	Special thread ₁₎			
32	35	500	12	22	M6	M10×1.25	M10	2.6	26	10
40	35	500	12	24	M8	M12×1.25	M12	3.3	30	13
50	70	500	16	32	M10	M16×1.5	M16	4.7	37	17
63	70	500	16	32	M10	M16×1.5	M16	4.7	37	17
80	70	500	20	40	M12	M20×1.5	M20	6.1	46	22
100	70	500	20	40	M12	M20×1.5	M20	6.1	51	22
125	70	500	32	54	M16	M27×2.0	M27	8	65	27

1) The special threads are only available as male threads.

- I
- CJP
- CJ1
- DNC**
- DNCB
- DNG
- C95
- SI
- CS1
- MB
- SU
- SC
- DSNU
- C85
- CJ2
- CM2
- MA
- MAL
- ADVU
- CQ2
- CQS
- SDA
- CU
- DPZ
- CXS
- TN
- ADVUL
- CQM
- MGP
- MGG
- CRA1
- CY1B
- CS
Auto switch
- D
Auto switch
- AC,AD
- HR
- RB
- RBQ